

A REQUEST FOR PROPOSAL FOR PROFESSIONAL SERVICES CONTRACT

Department of Highways
Professional Services Procurement Bulletin 2024-02
Bell | 11-167 | KY-74

This document constitutes a Request for Proposals for a Professional Service Contract from qualified individuals and organizations to furnish those services as described herein for the Commonwealth of Kentucky, Department of Highways.

I. PROJECT DESCRIPTION

County - Bell
Route - KY-74
Item No. - 11-167.00
Project Description - Enhancing Cumberland Avenue from US-25E to 30th Street with street improvements for vehicle and pedestrians, as well as storm water management to improve safety, congestion, and environmental impact

II. PROJECT INFORMATION

Project Manager - Sherri Chappell, P.E.
User Division - Professional Services
Approximate Fee - \$600,000 Preliminary Engineering
Project Funding - SPP Funds (State Funds)
Project Length - Approximately 1.56 miles

III. PURPOSE AND NEED

The purpose of this project is to address storm water management, safety, and congestion along Cumberland Avenue from US-25E to 30th Street. This project includes numerous signalized intersections, two bridges and several lane configurations. There is a need to improve the current drainage system along several portions of this roadway. One of the two bridges has a 22-ton weight limit. Due to the proximity of the local hospital, several schools, and industrial areas, the bridge will plausibly be replaced with a structure which allows for a higher weight limit. Additionally, safety analysis should examine crash data to determine needs for access management and/or lane reconfiguration.

IV. DBE GOAL

The Consultant team may include a DBE Participation Plan with their Response to Announcement to help the Department meet the 11.95% DBE goal established by FHWA. The plan would demonstrate how DBE companies will be mentored or used to assist in the area(s) pertaining to this contract. If included, an additional page will be allowed in the Project Approach (Section 7) to

exhibit this plan. No additional points will be provided in the Evaluation Factors for the DBE Participation Plan.

V. SCOPE OF WORK

The selected Consultant will be responsible for providing Preliminary Engineering including the preparation of preliminary line and grade (PL&G) plans, completing a PL&G inspection as well as completing an approved design executive summary.

This project may be advanced to Final Design upon the completion of Preliminary Engineering with a Contract Modification. The selected Consultant will then be required to provide engineering services to perform Final Roadway and Structural Design, including the preparation of any design studies, drainage design, right-of-way plans, construction plans, traffic control plans, and cost estimates as well as any other services that KYTC chooses not to perform with in-house forces.

VI. SPECIAL INSTRUCTIONS

The Department may retain any of the advertised services to be performed by in-house state forces.

Instructions for Response to Announcement can be found at:

<https://transportation.ky.gov/ProfessionalServices/Pages/Respond-to-an-Announcement.aspx>

VII. AVAILABLE STUDIES

[DNA Study – Bell | 11-167 | KY-74](#)

VIII. METHOD OF DESIGN

The selected Consultant shall utilize the most recent CADD Standards for Highway Plans Policy in the development of the highway plans. Refer to the 2019 CADD Standards for ORD V4 Project Development Memo for information pertaining to the latest CADD Standards and plan submittal.

IX. ENVIRONMENTAL SERVICES

The Department is expected to provide any necessary Environmental Services required for the project.

X. PHOTOGRAMMETRIC SERVICES

The Consultant will provide mapping and will furnish manuscripts in ORD format. Statewide Elevation data and Aerial photography can be found at the following link [KyFromAbove - Kentucky's Aerial Photography & Elevation Data Program](#). The selected Consultant shall supplement this information with conventional surveying as determined during project scoping.

XI. STRUCTURE DESIGN

The selected Consultant may provide the necessary engineering services to determine needed improvements of the structures involved, if any. When the project advances to Final Design and if the selected Consultant is retained for Final Design services, the selected Consultant shall do the necessary engineering services to submit to the KYTC an Advanced Situation Folder(s) for the appropriate structure(s). The selected Consultant may be responsible for any necessary Structure Design services. Structure Design of the proposed structure(s) may be added as a Contract Modification. Prequalification in the area of Structure Design is not required to be identified in the Consultant's Response to Announcement.

XII. GEOTECHNICAL SERVICES

The selected Consultant may provide all Geotechnical Services required for the project. The Preliminary Design contract may include preliminary geotechnical services to review available geological, mining, or other geotechnical information that could influence the selection of the preferred alternate. Geotechnical services necessary for the completion of Final Design may be added by contract modification at the appropriate time. At any time, if the Department has the capacity to provide these services, the Department may retain the advertised geotechnical services. Prequalification in the area of Geotechnical Services is not required to be identified in the Consultant's Response to Announcement.

XIII. TRAFFIC ENGINEERING

The Department will provide all traffic projections and related information.

XIV. UTILITIES

The Department will be responsible for determining the existing locations of utilities to determine feasibility of redesign or utility relocation and cost estimates.

XV. PREQUALIFICATION REQUIREMENTS

To respond to this project the Consultant must be prequalified in the following areas by the response due date of this advertisement:

ROADWAY DESIGN

- Surveying
- Advanced Drainage Analysis & Design
- Urban Roadway Design

TRANSPORTATION PLANNING

- Pedestrian & Bicycle Planning & Design

Geotechnical Services* (see note below)

- *Geotechnical Engineering**
- *Geotechnical Drilling**
- *Geotechnical Laboratory Testing**

Structure Design* (see note below)

- Spans Under 500 Feet*

Utility Design* (see note below)

- Utility Preconstruction Coordination*

* Note – These prequalifications are not required with the initial proposal as it is uncertain to the extent practicable if they are necessary. Should these services become necessary during the delivery of the project in this or future phases, the selected Consultant team must obtain the required qualifications before providing those services or bring on a prequalified subconsultant at that time.

XVI. PROCUREMENT SCHEDULE

Dates other than Response Date are tentative and provided for information only.

- Advertisement Date: August 8, 2023
- Response Date: August 30, 2023 by 4:30 PM ET (Frankfort Time)
- First Selection Meeting: September 1, 2023
- Final Selection: September 20, 2023
- Pre-Design Conference: September 27, 2023
- Consultant Fee Proposal: October 6, 2023
- Contract Negotiations: October 18, 2023
- Notice to Proceed: November 8, 2023

XVII. PROJECT SCHEDULE

- Existing Conditions Meeting March 2024
- First Local Elected Officials/Stakeholders Public Meeting April 2024
- Preliminary Alternative Review Meeting July 2024
- Second Local Elected Officials/Stakeholders/Public Meeting August 2024
- Preliminary Line and Grade Meeting October 2024
- Submit Design Executive Summary December 2024

XVIII. EVALUATION FACTORS

Consultants will be evaluated by the selection committee based on the following weighted factors:

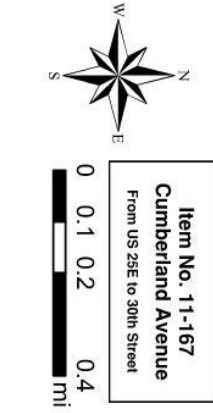
1. Project approach and proposed procedures to accomplish the services for the project. (20 Points)
2. Relative experience of consultant personnel assigned to project team with highway project for KYTC and/or federal, local or other state governmental agencies. (15 Points)
3. Past record of performance on projects similar in type and complexity. (15 Points)
4. Capacity to comply with project schedule. (10 Points)

5. Knowledge of the locality and familiarity of the general geographic area. (2 Points)

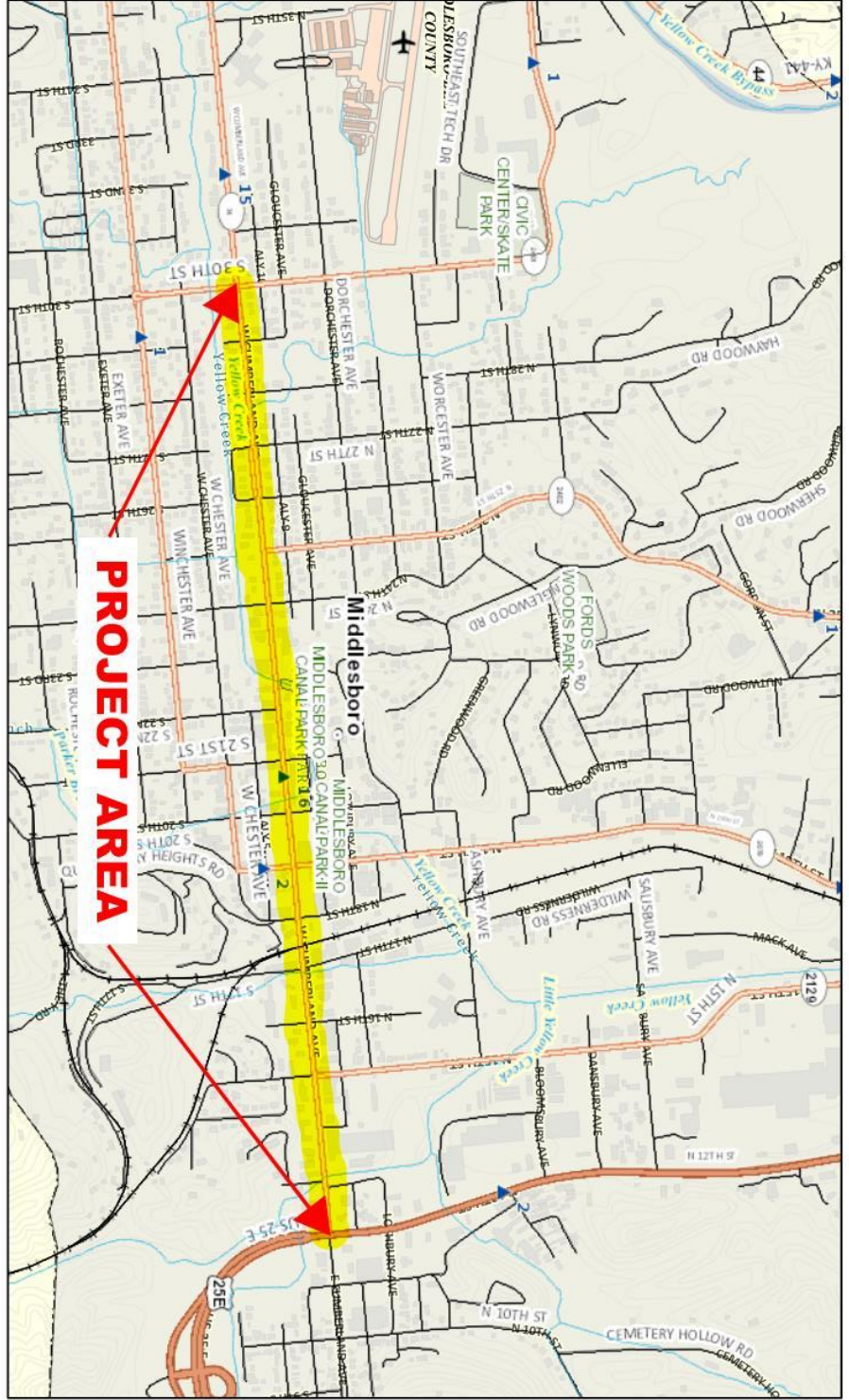
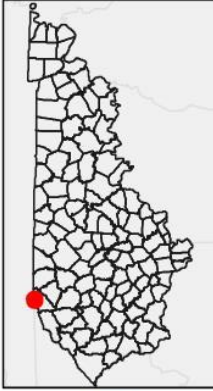
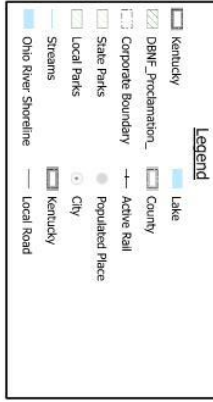
XIX. SELECTION COMMITTEE MEMBERS

1. Sherri Chappell, P.E., User Division
2. Randy Turner, P.E., User Division
3. Zachary Neihof, P.E., Secretary's Pool
4. Amanda Desmond, P.E., Secretary's Pool
5. Cindy Evensen, Governor's Pool

XX. AREA MAP



Item No. 11-167
Cumberland Avenue
From US 25E to 30th Street



11-167 Bell County